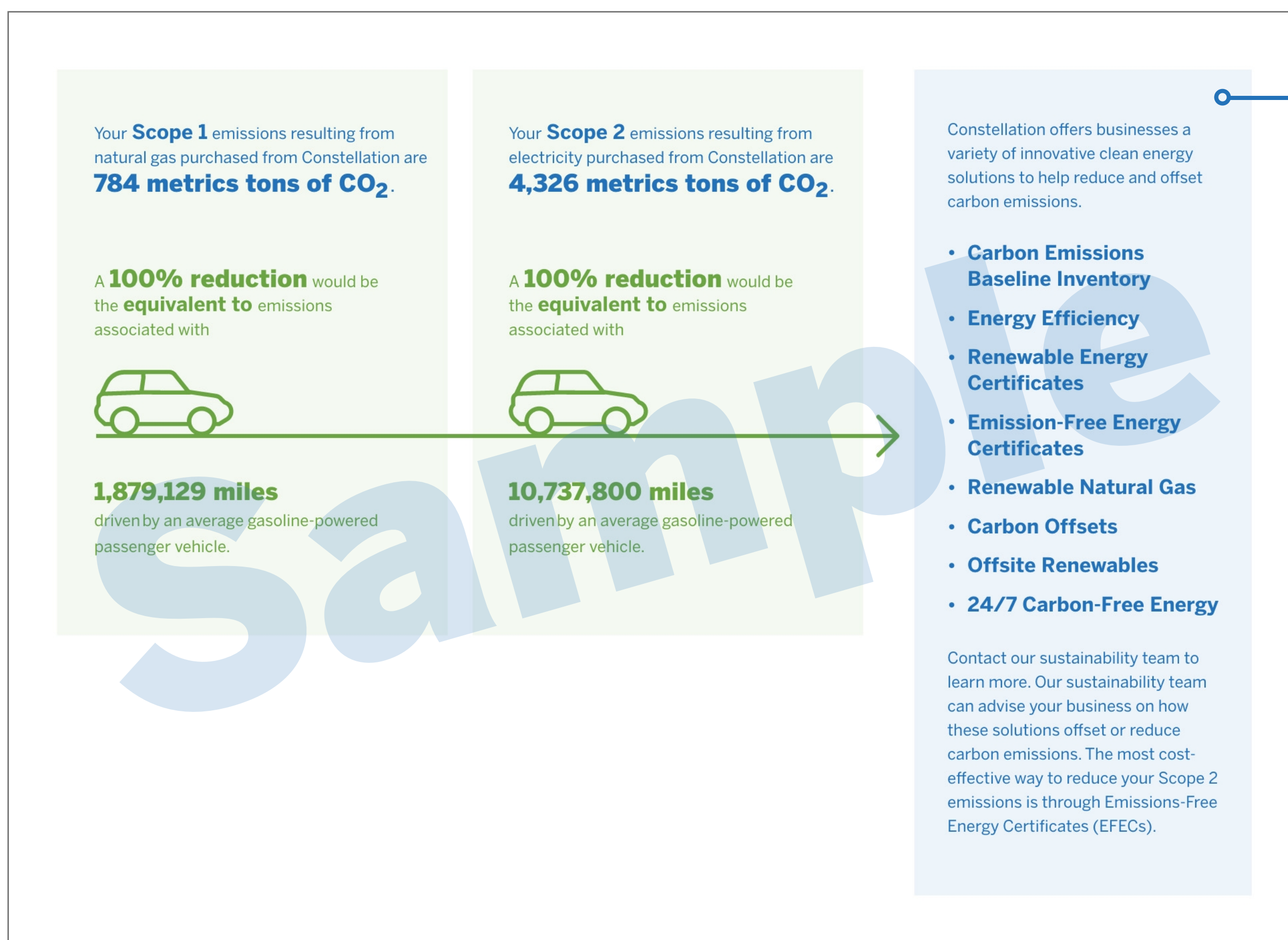


Achieve a carbon-free future.

It starts with an understanding of your current greenhouse gas emissions. From there, Constellation can connect you with customized solutions throughout your journey to reduce your emissions and meet your sustainability goals.

Sample emissions report



Constellation customers receive a customized report showing greenhouse gas emissions based on actual usage and the products that Constellation is providing to the customer, alongside the potential impact of energy efficiency projects and emissions mitigation. The report provides the information you need to start your journey to meet your sustainability and carbon reduction goals.

Get started.

Our energy professionals can help develop a solution that's right for you. Contact our sustainability team to begin building your custom roadmap today.

ghg.constellation.com/PURL

✉ SustainabilityTeam@Constellation.com

☎ [888.697.2012](tel:888.697.2012)

Types of emissions

To start the process, it's important to get acquainted with the various sources of emissions associated with businesses. Greenhouse gas emissions are classified as either Scope 1, 2 or 3 emissions based on their source.

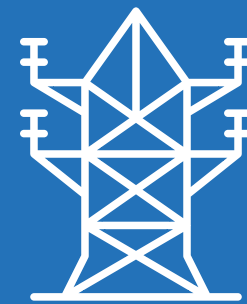


Scope 1 Emissions Direct

Emissions associated with on-site natural gas use (generation, heat, etc.) and fleet consumption of fossil fuels.

To reduce Scope 1 emissions, such as natural gas burned in a boiler or gasoline/diesel/fuel oil used in vehicles or equipment, you can:

- Implement energy efficiency projects
- Incorporate electric vehicles (EVs) into your fleet
- Purchase renewable natural gas (biogas)
- Procure carbon offsets



Scope 2 Emissions Indirect

Emissions from generation providing purchased electricity.

To reduce Scope 2 emissions, you can voluntarily match your electricity supply requirements with Emission-Free Energy Certificates (**EFECs**) or Renewable Energy Certificates (**RECs**) to support the use of emission-free fuels.

Take the next step toward reaching true zero emissions by using Constellation's electricity supply that is sourced 100% from carbon-free power, or go even further with our in-development **24/7** real-time carbon-free energy matching.



Scope 3 Emissions Supplemental

Emissions from indirect sources, such as employee business travel and supply chain management.

To reduce Scope 3 emissions, you can choose more sustainable vendors (or encourage existing ones to engage in more sustainable practices) that assist with the following:

- Purchased goods and services
- Business travel
- Employee commuting
- Waste disposal
- Use of sold products
- Transportation and distribution (up and down stream)
- Investments
- Leased assets and franchises

In addition to the above, any Scope 1, 2 or 3 emissions can be indirectly reduced through the purchase of carbon offsets.

Support a cleaner, healthier environment for your business and community.



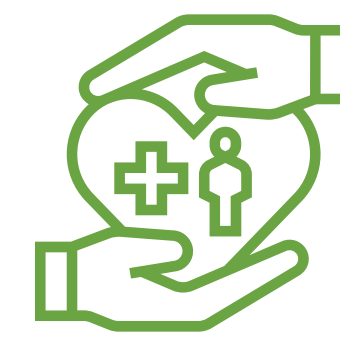
Reduce energy usage

Your business can become more efficient if you spend less on fossil-based energy and therefore cause fewer emissions.



Meet environmental, social & governance (ESG) principles

Consumers and investors increasingly expect corporations to reduce emissions as a demonstration of their commitment to being a good corporate citizen.



Improve public health

Your sustainability goals can directly and positively impact the environment by improving air quality and reducing emissions.

Our energy professionals can help you build a custom roadmap to meet your sustainability and carbon reduction goals at each step of your journey.



Understand your facility usage and utility bills

Analytics platforms such as **Pear.ai** can help you manage carbon emissions data associated with your utilities, including energy, water, sewer, and diesel. Use it to generate valuable insights, such as baseline energy usage data and how energy efficiency upgrades and other options can reduce emissions.



Make energy efficiency upgrades

Energy efficiency upgrades, such as LED lighting and HVAC upgrades, can help reduce energy consumption and carbon emissions. With Constellation's Efficiency Made Easy[®] (**EME**) program, you can implement those infrastructure improvements with no upfront capital.



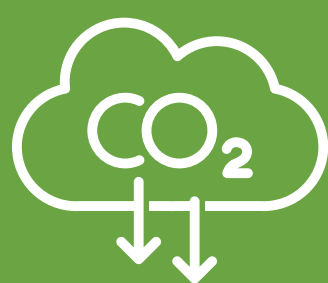
Purchase EFECs and RECs

Emission-Free Energy Certificates (**EFECs**) represent the emission-free attributes of generating sources that do not emit greenhouse gases, such as solar, wind, nuclear and hydropower. At today's prices, these are the most cost-effective certificates available. Renewable Energy Certificates (**RECs**) represent the emission-free attributes of one megawatt hour (MWh) of electricity generated only by renewable power plants, such as from wind or solar power.



Explore renewable natural gas

Directly reduce greenhouse gas emissions resulting from natural gas consumption by matching your gas purchases with environmental attributes of renewable natural gas (**RNG**), derived from sources including landfills, wastewater treatment plants and commercial & agricultural waste digesters.



Leverage carbon offsets

Indirectly reduce such emissions through the purchase of **carbon offsets**, which represent a verified reduction in emissions of carbon dioxide or other greenhouse gas emissions made elsewhere through forestry, energy efficiency, industrial process improvements and carbon capture & sequestration projects.



Procure offsite renewables

Through Constellation Offsite Renewables solutions, you have the ability to go beyond purchasing certificates and integrate energy from specific renewable energy projects in your region. Purchase renewable energy from existing (**CORE**) or new-build (**CORE+**) generation, including solar and wind facilities, into load-following energy supply.



Pursue 24/7 matching of clean electricity with your load

By matching your electricity use with a local emission-free energy source in real time, you can go beyond other net-zero programs to allow you to eliminate the carbon impact of your operations and fully achieve zero emissions goals.

Start your customized journey today ghg.constellation.com/PURL

Constellation is the nation's largest carbon-free energy producer and a leading supplier of clean energy solutions.

Achieve your sustainability targets

With our broad array of innovative clean energy solutions, Constellation can help you achieve your carbon reduction goals at each step of your journey. Work with our energy professionals to develop the right solutions for your business. Put your strategy into action. Transform your business to confront the climate crisis.

© 2022 Constellation Energy Resources, LLC. The offerings described herein are those of either Constellation NewEnergy, Inc. or Constellation NewEnergy-Gas Division, LLC, affiliates of each other. Brand names and product names are trademarks or service marks of their respective holders. All rights reserved. Errors and omissions excepted.

Disclaimer

This report is based solely on information available to Constellation as Customer's supplier of electricity and/or gas, and does not quantify emissions or mitigation measures associated with any of Customer's activities other than the consumption of electricity and/or natural gas supplied by Constellation during calendar year 2021. This report is for informational purposes only and is not intended to be used by Customer as the basis for any report to third parties for any purposes. Constellation expressly disclaims any express or implied guaranty, representation or warranty regarding any information set forth herein, and shall have no liability for any claims, statements or representations made by Customer based on such information. The possible performance results of any product discussed herein are not necessarily indicative of future results. Actual results will vary based on several factors, including type of mitigation measures. Nothing in these materials constitutes an offer to sell or purchase regulated products or services by any such entity in any jurisdiction in which the purchase or sale of such regulated products or services by such entity is prohibited. The information contained herein has been obtained from sources which Constellation believes to be reliable. Constellation does not represent or warrant as to this report's accuracy or completeness. All representations and estimates included herein constitute Constellation's judgment as of the date of this document and may be subject to change without notice. This material has been prepared solely for informational purposes relating to our business as a physical energy provider. We are not providing advice regarding the value or advisability of trading or soliciting or accepting orders for swaps, options or futures or any other activity which would cause us or any of our affiliates to be considered a commodity trading advisor or introducing broker under the Commodity Exchange Act. These materials are not intended as a recommendation of, or advice in connection with, a municipal financial product or an issuance of municipal securities. Constellation is not a municipal advisor (within the meaning of the Securities and Exchange Commission's rules as to the Registration of Municipal Advisors), is not making any financial recommendations to you and is not providing any financial advice. Constellation is not your agent, advisor or fiduciary. Constellation has not assumed, and does not owe, a fiduciary duty to you (within the meaning of the Securities and Exchange Commission's rules as to the Registration of Municipal Advisors, or otherwise) with respect to the information and material contained herein. You should discuss information of a financial nature with internal or external advisors and experts that you deem appropriate before taking any action related thereto. This material shall not be reproduced (in whole or in part) to any other person without the prior written approval of Constellation.

Location-based Scope 2 emissions associated with electricity supplied by Constellation are calculated using emissions factors available from the Emissions and Generation Resource Integrated Database (eGRID) of the United States Environmental Protection Agency (US EPA) based on billed customer usage. Emissions associated with natural gas supplied by Constellation are calculated as 0.053 metric tons of CO₂ equivalent per 1 MMBtu of natural gas burned, based on billed Customer usage.

Electricity or Gas Supplier License/Order #s: CA 1359, CTA0032; CT 01-06, 06-07-11; DE 00-162; DC GA06-2, EA01-5; GA GM-46; IL 16-0205, 17-0330; IA G-0010; ME 2000-989; MD IR-655, IR-500; MA GS-030, CS-015; MI U-14867, U-13660; NE NG-0043; NH DM 17-024; NJ GSL-0101, ESL-0016; OH 09- 153G, 00-003E; OR ES4 (12-162); PA A-2016-2542899, A-125095, A-110036; RI 2379(Z1), D-96-6(E); TX 10014, VA G-26, G-51, E-11A.